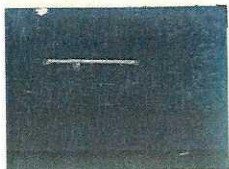


Model 851

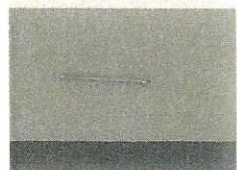
Sedan, Brougham and Coupe



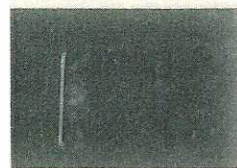
Body and fenders . . . Desdemona Blue
 Belt Monte Carlo Blue
 Wheels Chrome paint
 Striping Cheriot Vermillion



Body and fenders . . . Sandeen Brown
 Belt and Wheels . . . Plum Brown
 Striping English Vermillion

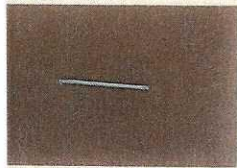


Body, wheels and striping . Greyhaze
 Belt and fenders . . . Artillery Grey

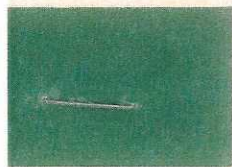


Body, fenders
 and wheels . . . Swiss Green #4
 Striping Copper

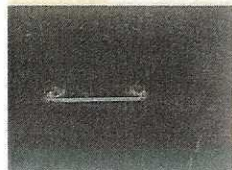
Cabriolet and Phaeton Sedan



Body, fenders
 and wheels Burnt Rust
 Striping Copper



Body, fenders
 and wheels Neptune Blue
 Striping Sundusk Cream



Body, fenders
 and wheels Carmel Beige
 Belt Thicket Green #3
 Striping . Combined Red and Yellow

Model 653

Sedan, Brougham and Coupe



Body, fenders
 and wheels . . . Storm King Green
 Belt Willowmere Green
 Striping Medium Green



Body, fenders
 and wheels . . . Empress Beige
 Belt Britannic Beige
 Striping Cream

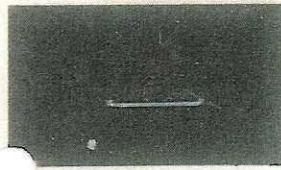


Body, fenders and wheels . Shadowlite
 Belt Plum Brown
 Striping Rust

Cabriolet and Phaeton Sedan



Body and fenders . Palm Beach Tan
 Wheels and striping . Derby Red



Body and fenders . . . Delray Green
 Wheels and striping . Nassau Orange

All Models and Body Types

BLACK

Body, fenders and wheels . . . Black
 Striping Silver

COLORS ARE SUBJECT TO CHANGE WITHOUT NOTICE

AUBURN AUTOMOBILE COMPANY

AUBURN, INDIANA, U. S. A.

1935 AUBURN FACTORY
 COLOR CHART

SOME COLORS WERE USED
 ON 1936 AUBURN CARS

SEN
 GILLMAN

-On each chip the major color is the body color. Where a contrasting color appears at the bottom of the chip, that is the upper moulding.

Model 852 and 852 Supercharged Sedan, Brougham and Coupe



Body, fenders
and wheels - - - - Powder Blue
Striping - - - - - Cream



Body - - - - - Thrush Brown
Upper moulding, fenders
and wheels - Thrush Brown Dark
Striping - - - - - Ivory



Body, fenders
and wheels - Twilight Mist Blue
Striping - - - - - Copper

Cabriolet and Phaeton Sedan



Body and fenders - Harbor Mist Gray
Wheels and striping - Blue Sequence
Upholstery - - - - - Blue Leather

Body and fenders - Cigarette Cream
Wheels and striping - - - - Brown
Upholstery - - - - - Tan Leather

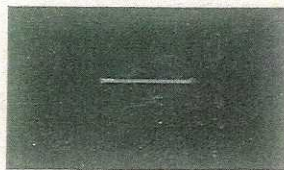


Body, fenders
and wheels - - - - Redwood Beige
Striping - Combined Orange and Gold
Upholstery - - - - - Tan Leather

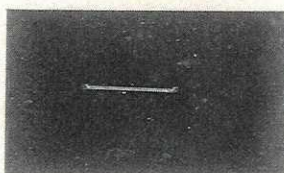
Model 654 Sedan, Brougham and Coupe



Body, fenders and wheels - Sun Tan
Upper moulding - - - - - Brown
Striping - - - - - Million



Body, fenders
and wheels - - - - Cool Orchard Green
Striping - - - - - Gold



Body, fenders
and wheels - - - - Midnight Blue
Striping - - - - - Russian Red

Cabriolet and Phaeton Sedan



Body, fenders and wheels - Burnt Rust
Striping - - - - - Copper
Upholstery - - - - - Tan Leather



Body, fenders
and wheels - - - - Deep Sea Green
Striping - - - - - Chrome Yellow
Upholstery - - - - - Tan Leather

All Models and Body Types

Ebony
Black

Body, fenders and wheels - Ebony Black
Striping - - - - - Silver
Upholstery in Cabriolet and Phaeton
Sedan--Black Leather or Red
Leather; if Red Leather, striping
and wheel will be Light Carmine.

COLORS ARE SUBJECT TO CHANGE WITHOUT NOTICE

AUBURN AUTOMOBILE COMPANY

AUBURN, INDIANA, U. S. A.

1936 AUBURN FACTORY
COLOR CHART

SEAN
GILLIAND

TERRY
ARE THESE WHAT YOU'RE LOOKING FOR?