

DATE August 19, 1936

NUMBER 45

SUBJECT: CABRIOLET TOP

TO RAISE CABRIOLET TOP

1. Unfasten latches on top opening lid and raise lid until it catches in upright position.
2. Raise top up from cavity to position shown on sketch.
3. Fold small covers on each side of lid downward, and then pull plunger on right hand lid hinge forward, and drop lid to normal body position and fasten latches.
4. Fasten the latches attaching the rear deck top rail to top of deck lid.
5. Assemble front bow "C" to windshield "D". Make sure that the rubber strip running along the underside of the bow lays evenly along the top of the windshield before fastening the latches.
6. Fasten three fasteners on each side, attaching the top material to slat iron. After this has been done fasten five more fasteners on each side, attaching the weatherseal to slat iron.
7. Fasten one more fastener on each side holding the top material to body at rear door.

TO LOWER CABRIOLET TOP

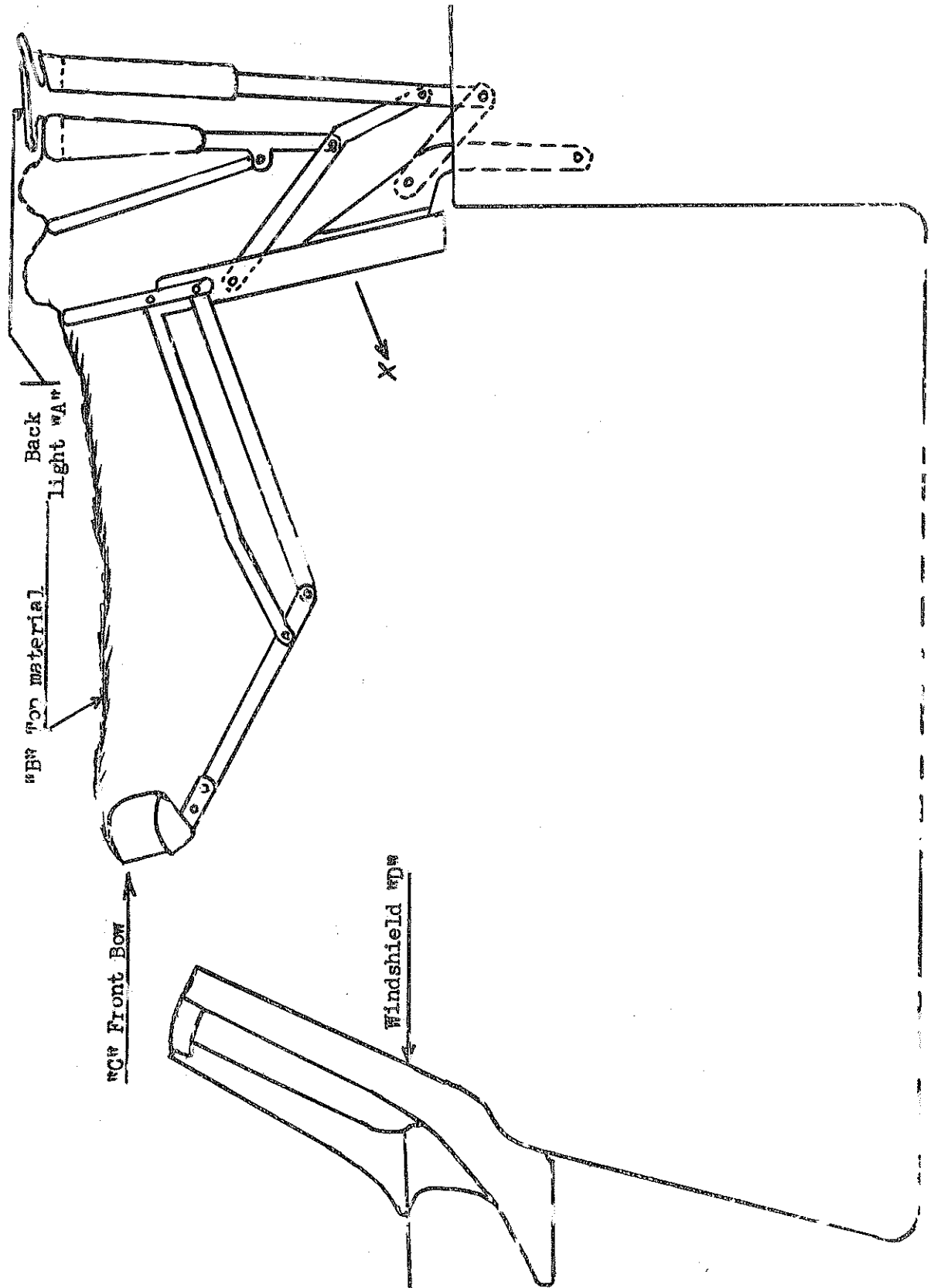
1. Unfasten one fastener on each side holding the top material to body at rear of door.
2. Unfasten five fasteners on each side attaching upper weatherseal to slat iron. After this has been done unfasten three more fasteners on each side, attaching top material to slat iron.
3. Unfasten latches holding front bow "C" to windshield "D" and raise bow off windshield as shown on sketch.
4. Unfasten the latches holding the rear lid to body.
5. Unfasten the latches holding the rear deck top bow to the lid and fold top as shown on sketch. Open doors allowing top assembly to fall forward (see "X" on sketch) for clearance when raising the top lid.
6. Be sure that the back light "A" is in position as shown on sketch, to prevent breakage.
7. Raise lid until it catches in upright position.
8. Fold complete top compactly into body cavity.

SERVICE
BULLETIN

AUBURN AUTOMOBILE COMPANY

Cord Service Bulletin No. 45 Page 2.

9. Raise small covers on each side of lid flush with lid surface then pull plunger on right hand lid hinge forward, lowering the lid to normal body position and fasten latches.



C
O
R
D

SERVICE
BULLETIN

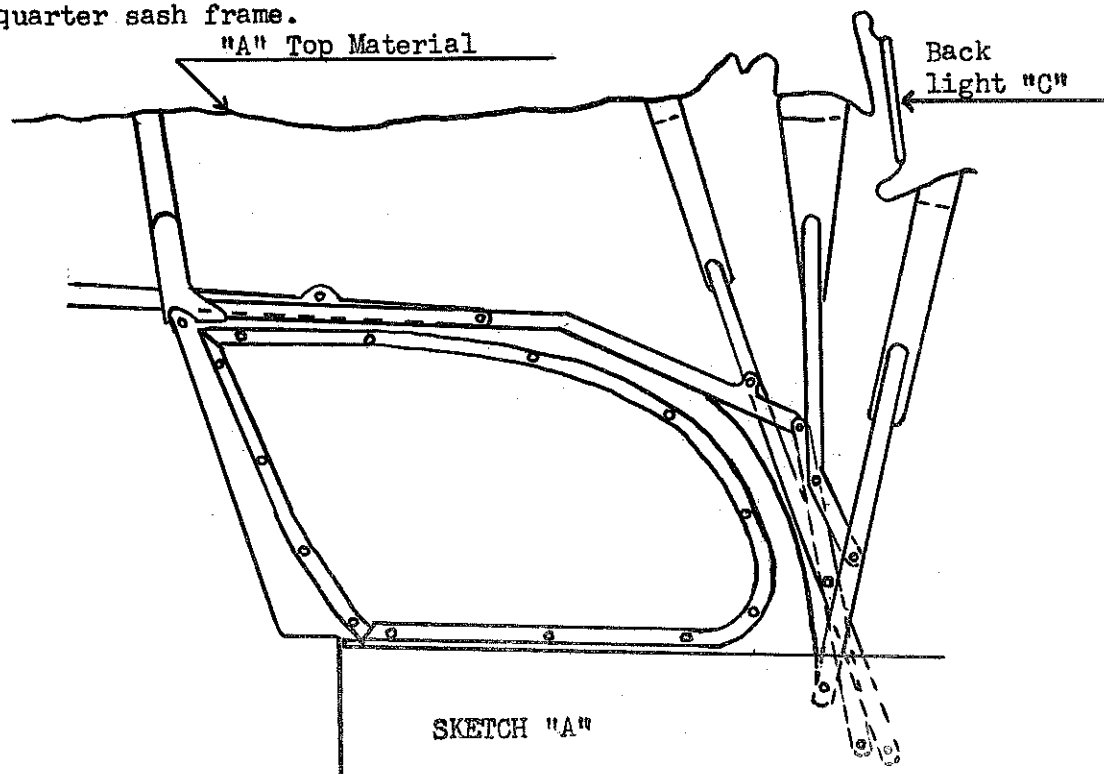
DATE August 19, 1936

NUMBER 46

SUBJECT: PHAETON TOP

TO RAISE PHAETON TOP.

1. Remove quarter cover plates and stow in cover.
2. Unfasten lid latches and raise lid until it catches in upright position.
3. Raise quarter sash and assemble screw at rear.
4. Raise top to position shown on sketch "A", and close lid to normal position. Unfold front bow as shown in sketch "B". Lower deck top bow to lid.
5. Assemble wing screw for holding slat iron to top of quarter pillar.
6. Assemble front bow "B" to windshield. Make sure that the rubber strip running along the underside of the bow lays evenly along the top of the windshield before fastening the latches.
7. Fasten latches for holding rear deck top bow to lid.
8. Fasten latches holding rear lid down in normal position.
9. Fasten five fasteners on each side attaching the upper weatherseal on each side to slat iron.
10. Fasten nine fasteners on each side attaching top material to body at quarter sash frame.



AUBURN AUTOMOBILE COMPANY

Cord Service Bulletin No. 46 Page 2

TO LOWER PHAETON TOP

1. Unfasten nine fasteners on each side attaching top material to body and quarter sash frame.
2. Unfasten five fasteners on each side attaching the upper weather-seal to slat iron.
3. Remove the wing nut at the top of the quarter pillar.
4. Unfasten the latches holding front bow "B" to windshield and raise bow off windshield.
5. Unfasten the latches holding the rear lid to body.
6. Unfasten the latches holding the rear deck top bow to the lid.
7. Fold the top to position shown on sketch "A" and raise rear lid until it catches in upright position.
8. Be sure back light "C" is in position as shown on sketch "A" to prevent breakage, also pull pads and top material out from between the bows to allow more compact folding. Fold top material back over bows, break slat irons and fold front bow forward and down between the slat irons as shown on sketch "B".
9. Fold complete top compactly into body cavity. Pull plunger on right hand lid hinge forward, lowering the lid to normal body position and fasten latches.
10. Reassemble wing screw at top of quarter pillar to prevent losing.
11. Remove thumb screw at bottom of quarter sash assembly, partially fold assembly, reassemble screw into quarter sash to prevent losing, then fold quarter sash completely into body. Put covers in place and tighten thumb screws.

AUBURN AUTOMOBILE COMPANY

Cord Service Bulletin No. 46 - Page 3

